

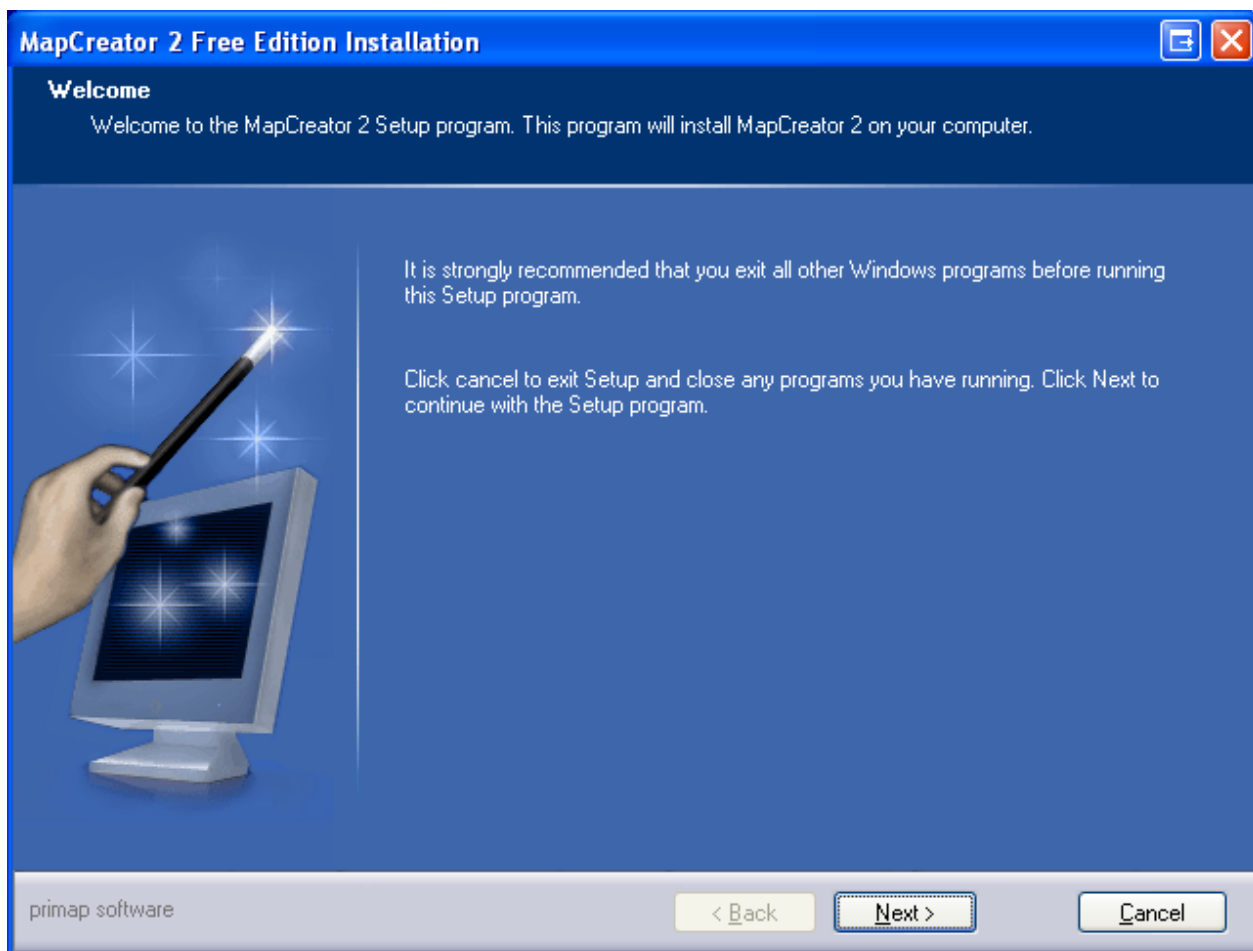
Tutorial MapCollection

The maps of the MapCollection are available in **picture format (PNG)** and in **MapCreator format (MCR)**. This Tutorial shows how to edit maps in MapCreator format with **MapCreator**.

We will edit the map **Australia Towns + Borders 1000x927** ([Download-Link](#)). We want to remove and add some towns. Then we change the labeling of the towns and change the background of the map.

Installation of MapCreator

If you haven't installed MapCreator, the Download of the Free Edition is [here](#). After that you have to install MapCreator. Open the downloaded installation file (MapCreator3-Setup.exe) und follow the installation instructions.



Open the map in MapCreator

If the MapCreator installation is ok, the icon of the file **Australia Towns + Borders 1000x927.MCR** will be displayed as a small globe:

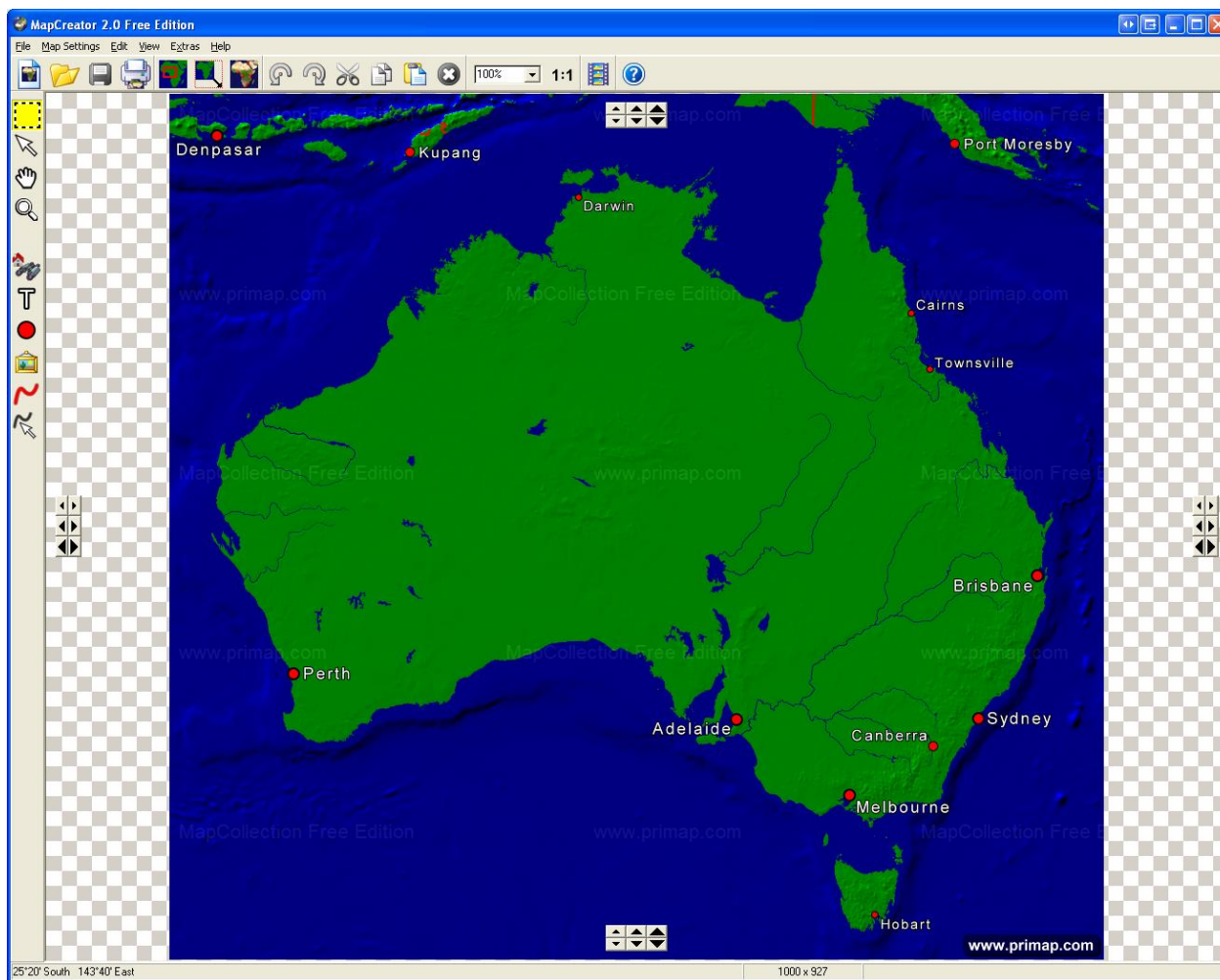


Australia Towns +
Borders 1000x927.MCR



Map Australia Towns +
Borders 1000x927.PNG

By double-clicking the file you will start MapCreator, the map will be automatically loaded. After MapCreator is started, your screen should now look like this:



Remove town

We now wish to edit the towns shown in the map. For this we click on the tool **Edit map objects** on the tool bar.



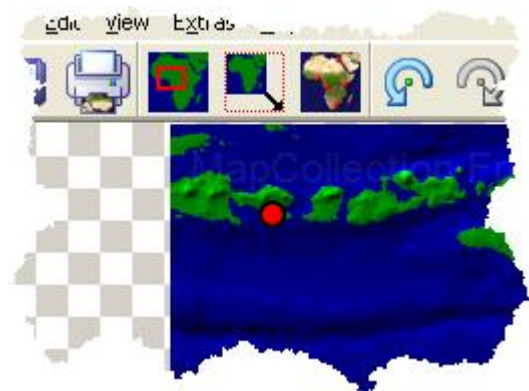
We want to show only the most important towns of Australia in our map. For this we remove all towns except Sydney, Melbourne, Brisbane, Canberra, Adelaide, Perth and Darwin. To remove a town we first have to select it. For this we have to click on the text **Denpasar** in the upper left corner of the map.



Now we click on the button **Delete** on the standard bar or press the **Delete-key**.



The text Denpasar should now be removed from the map.



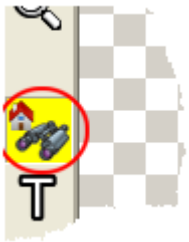
In the same way we will now remove the symbol of the city Denpasar. Click on the red circle symbol and execute the function **Delete**.

In this way we will remove all the other towns which we don't want to have in our map. The map should now look like this:

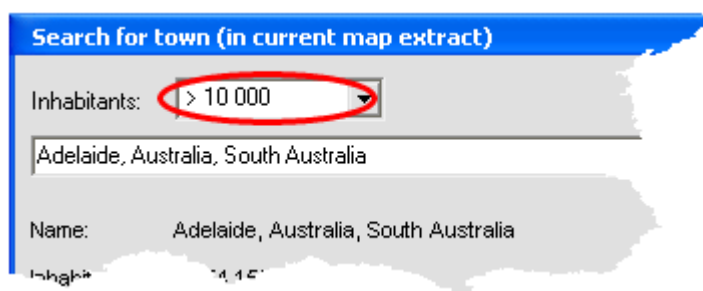


Add town

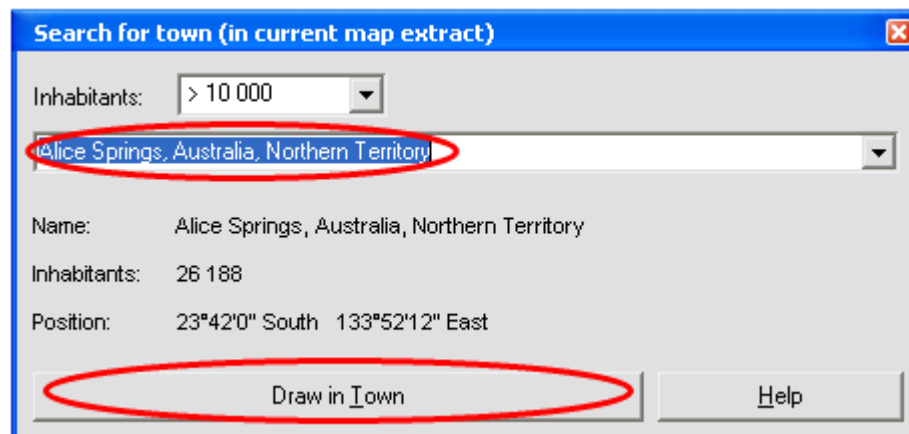
The most important town in our map is **Alice Springs** in the center of Australia. The town is not visible on the map, we have to add the town. Select the **tool Search for town** on the tool bar.



The window **Search for town** is now opened. In order to find the 2 towns, we first have to lower the population limit to the number from which the search is being made. In the list field **population** set the value **>10,000**.



In the list field with towns choose **Alice Springs**.



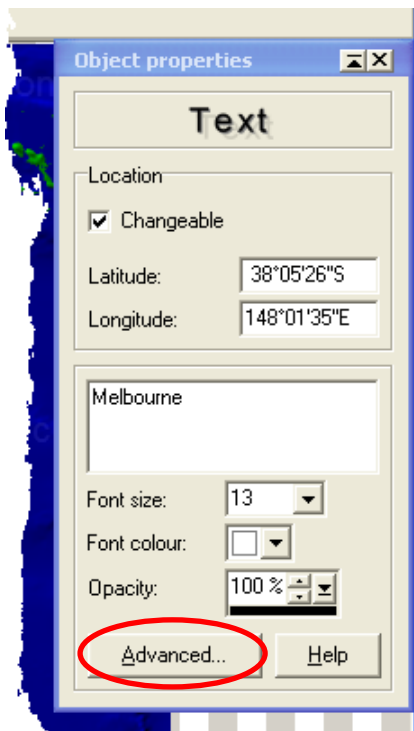
Now click on the button **Draw in town**, the town will be drawn in. After that you can close the window **Search for town**.

The map should now look something like this:

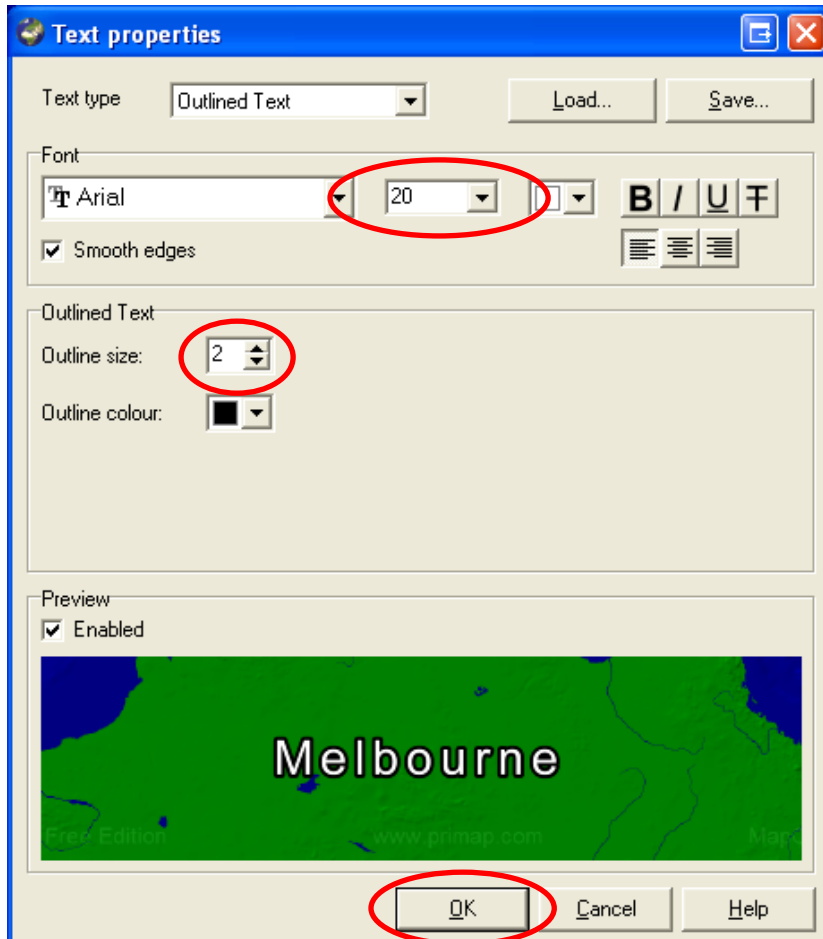


Enlarge labels

The labels of the towns are too small, we want to enlarge it. We begin with the town Melbourne. For this, click on the text Melbourne. The text is now selected, the window with **Object properties** is opened.



Click on the button **Advanced** to edit the object properties. We increase the **font size to 20** and the **Outline size to 2**.



Now click OK for the changes to take effect.



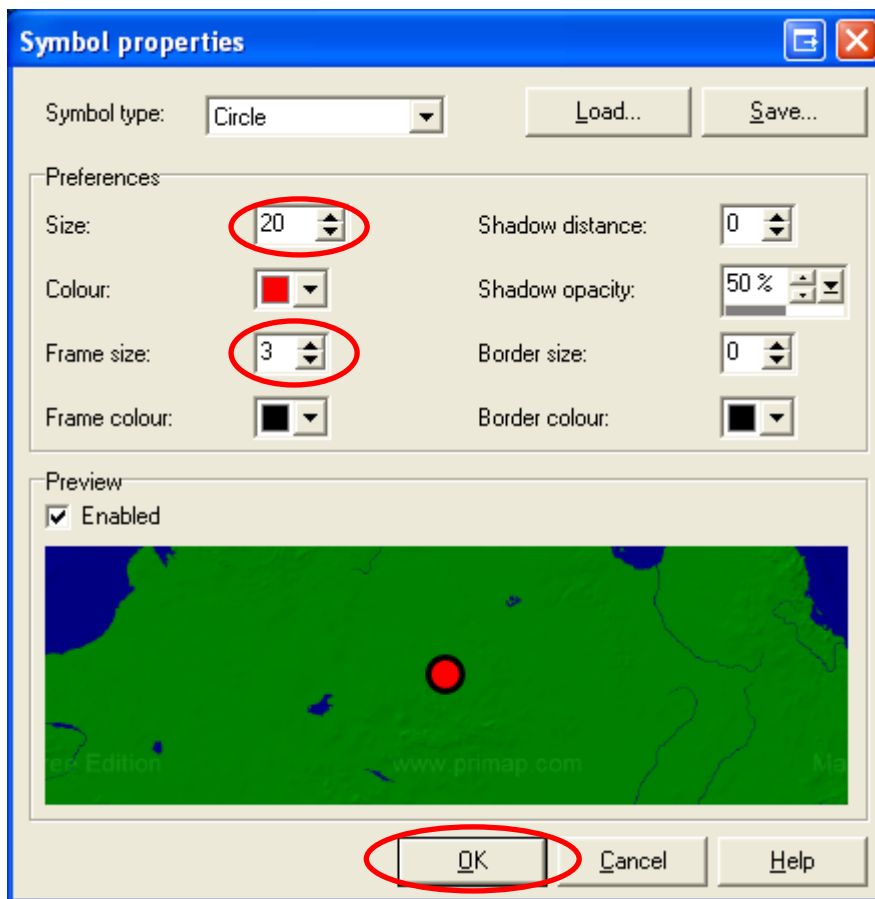
The text is now enlarged, but it is not correctly placed. We have to change the position of the text. Using the left mouse button click on the text object Melbourne, keep pressing the mouse button and move the text object to an appropriate position. After this, the labeling could look like this:



To enlarge the **symbol** of the town we have to click on the symbol to select it. The window with **Object properties** opens and we click **Advanced** to edit the symbol.



We increase the **Size to 20** and the **Frame size to 3**.



Now click OK for the changes to take effect. The map should now look like this:



In this way we change the labeling and the symbols of the other towns. To select several map objects at once, press **Shift** while clicking the mouse.

After that, the map should look like this:



Emphasize a town

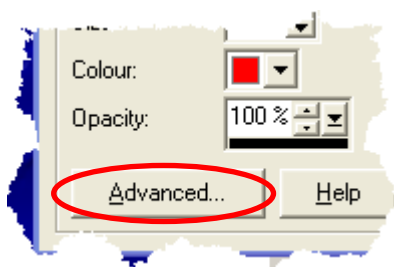
Because we want to emphasize **Alice Springs**, we have to make some additional changes. We select the text **Alice Springs** and click on **Advanced** in the window **Object properties**.



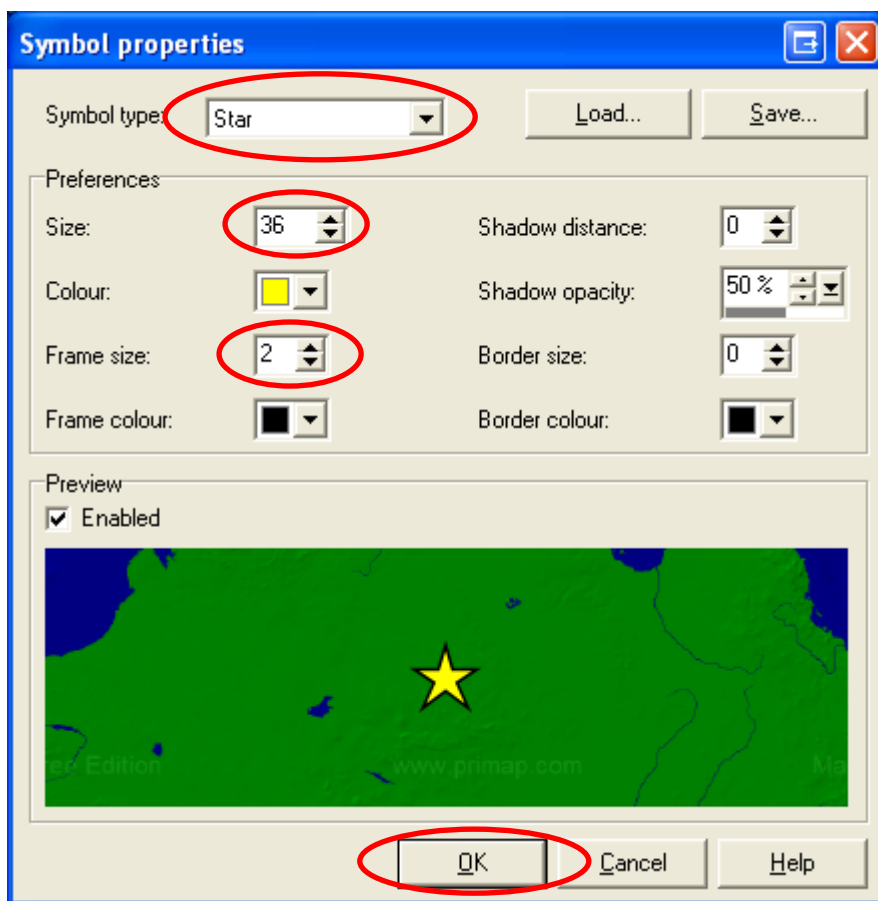
We increase the **font size to 18**, the **Outline size to 2** and set the **font color to yellow**.



We continue with OK, **select the symbol** of the town Alice Springs and click on **Advanced** in the window **Object properties**.



We choose the **Symbol type Star**, increase the **size to 36** and the **frame size to 2**.

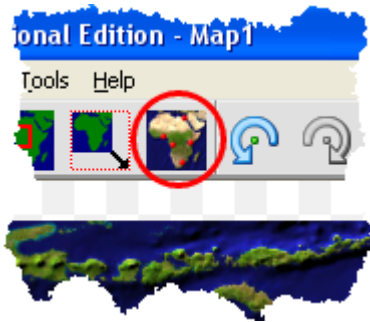


We continue with OK. Then we move the labeling of Alice Springs to an appropriate position. The map should now look like this:

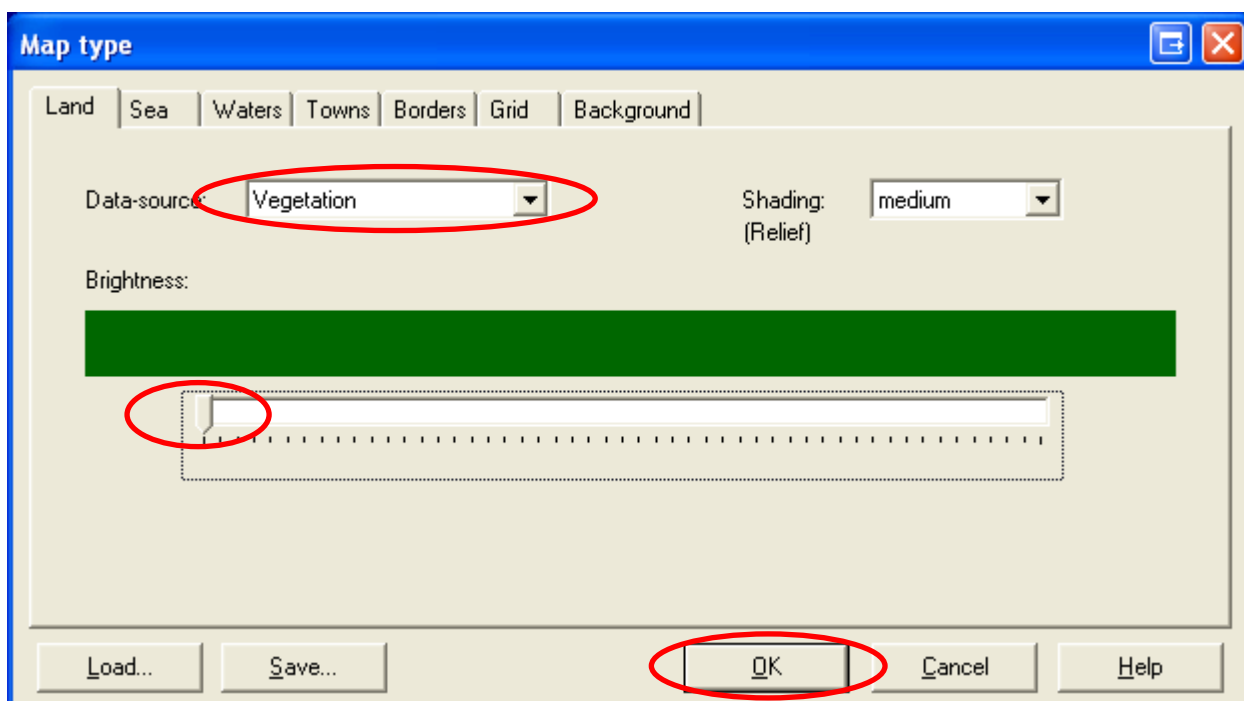


Background change

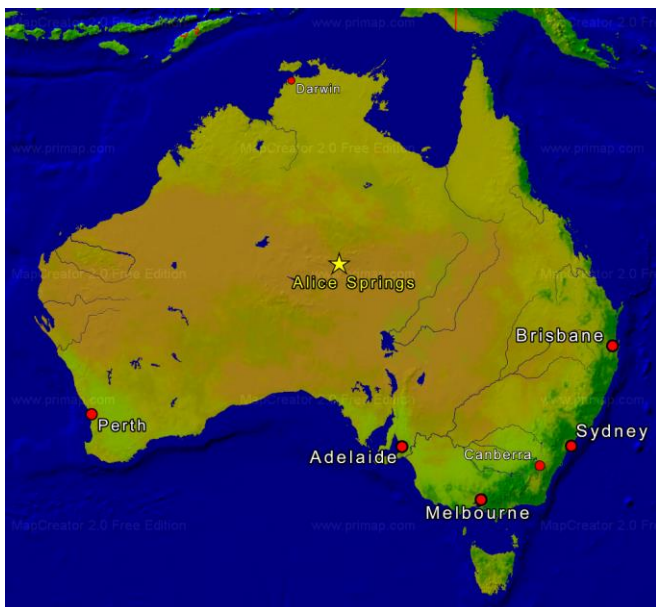
Now we want to change the uni-coloured background of the landmass. We want to see the Vegetation. Click on the button **Set map type** on the standard bar.



Select the register **Land** and set the value of the field **Data-source** to **Vegetation**. Then lower the **Brightness** to its minimum level.



After that, the map should look like this:



Additional labeling

Now we add the title **Australia 2012** to the map. For this we use the **tool Add Text** on the tool bar.



Click with the left mouse button in the still free area of the map. The window for entering text will open. Type in the text shown below and click **OK**.



Change to the **tool Edit map objects** and select the text **Australia 2012**.

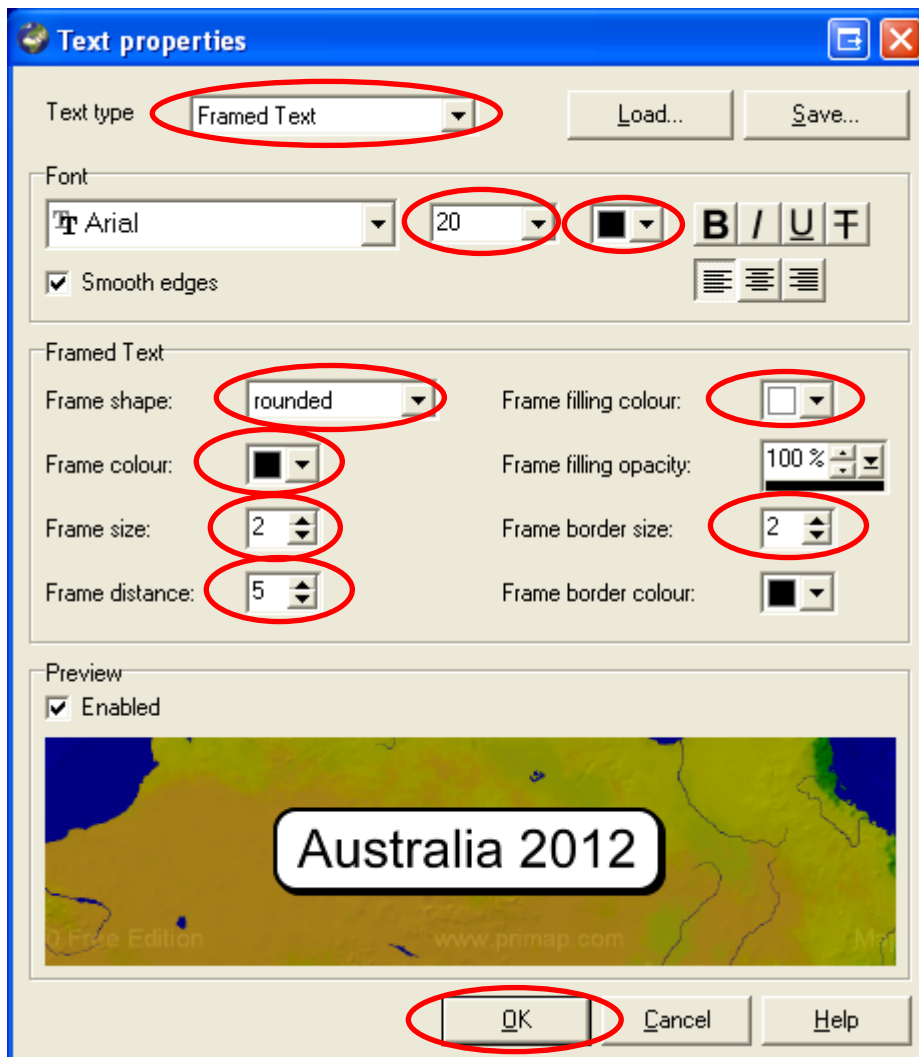


To edit the **Text properties**, click on the button **Advanced** in the window **Object properties**.



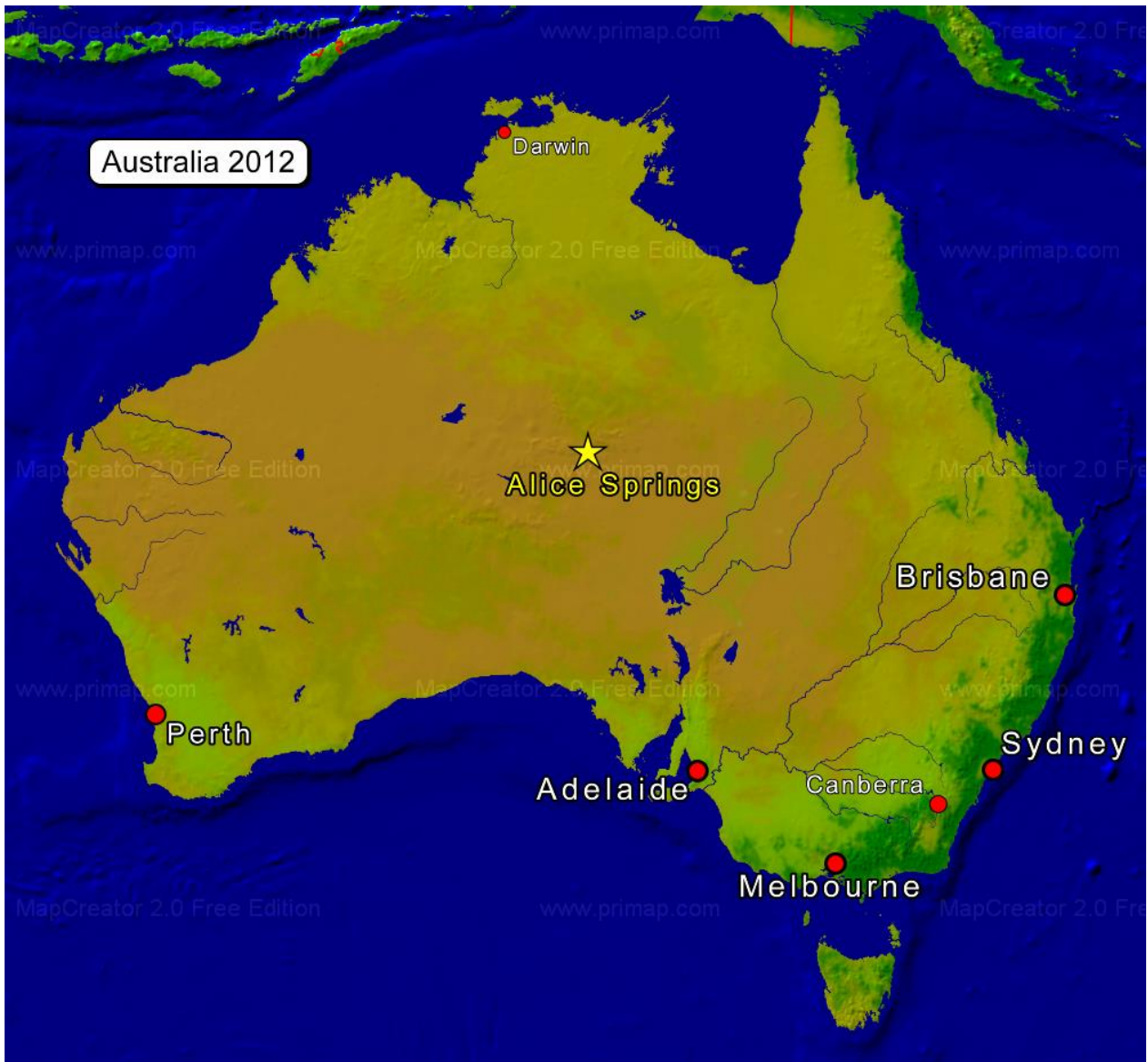
The window **Text properties** is opened. Now set the following values for the **Text properties**:

- **Text type:** Framed text
- **Text size:** 20
- **Text colour:** black
- **Frame type:** rounded
- **Frame colour:** black
- **Frame width:** 2
- **Frame distance:** 5
- **Frame fill-in colour:** white
- **Frame border width:** 2



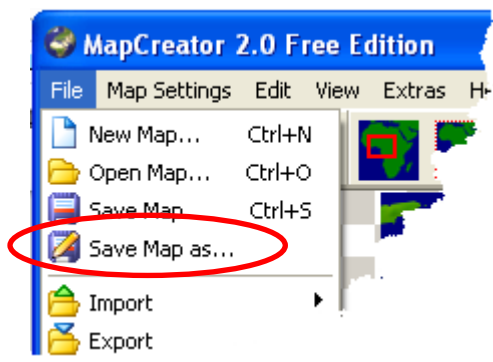
Then click on **OK** and move the text to an appropriate position.

The map should now look like this:

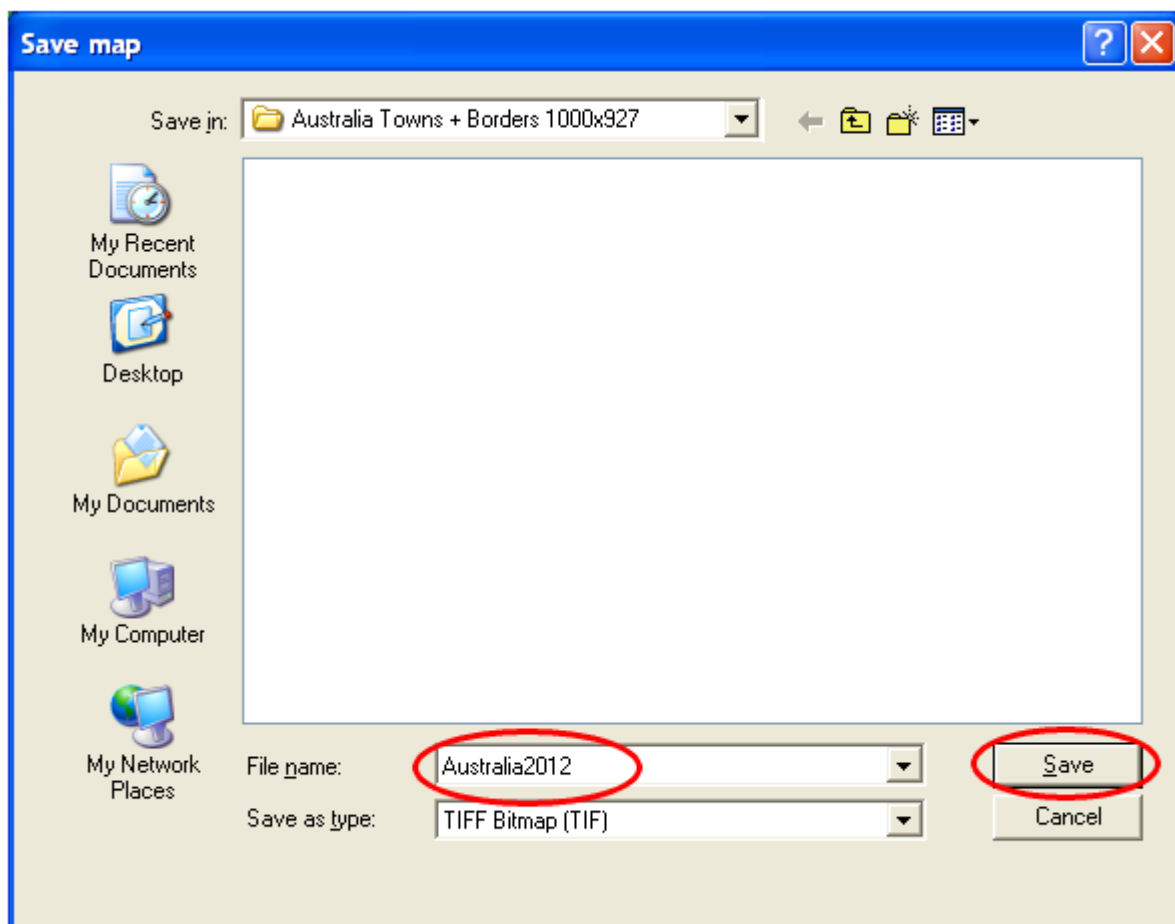


Save map

Finally we have to save the map. For this we choose the function **Save map as** in the **File** menu:



Enter as filename **Australia2012** and click on the button **Save**.



Two files were created. One in **picture format (TIF)** and one in **MapCreator format (MCR)** for further processing of the map in MapCreator.